

sonicVISION

1:500 Measured Depth

Recorded Mode Log

Company: Beach Petroleum Ltd

Well: Spikey Beach-1

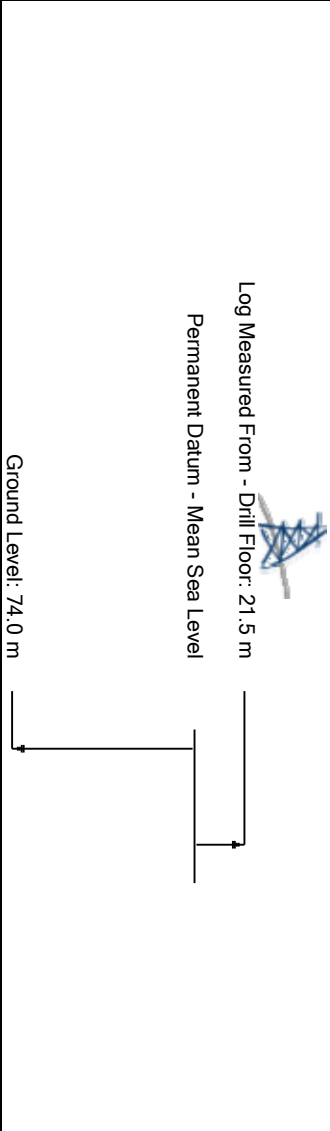
Field: Exploration

County: n/a

State: Tasmania

Country: Australia

Section:	Custom:
Township:	Rig Name: Ocean Patriot
Range:	Rig Type: Semi Submersible
FL:	Exploration
FL1:	
FL2:	



Acquisition Dates:		Other Services:
Print Interval:	200.0(m) to 2089.9(m)	Directional Surveys
Index Types:	Measured Depth	
Index Scales:	1:500	
Depth Source:	Driller's Depth	
Depth Sensor:	DES	
Conveyance:	Drill Pipe	
Print Type:	Field	
Spud Date:	05-Sep-2009	

Disclaimer

THE USE OF AND RELIANCE UPON THIS RECORDED-DATA BY THE HEREIN NAMED COMPANY (AND ANY OF ITS AFFILIATES, PARTNERS, REPRESENTATIVES, AGENTS, CONSULTANTS AND EMPLOYEES) IS SUBJECT TO THE TERMS AND CONDITIONS AGREED UPON BETWEEN SCHLUMBERGER AND THE COMPANY, INCLUDING: (a) RESTRICTIONS ON USE OF THE RECORDED-DATA; (b) DISCLAIMERS AND WAIVERS OF WARRANTIES AND REPRESENTATIONS REGARDING COMPANY'S USE AND RELIANCE UPON THE RECORDED-DATA; AND (c) CUSTOMER'S FULL AND SOLE RESPONSIBILITY FOR ANY INFERENCE DRAWN OR DECISION MADE IN CONNECTION WITH THE USE OF THIS RECORDED-DATA.

Contents

1. Header

2. Disclaimer

3. Contents

4. Survey Record

5. Merge Composite

5.1 Software Version

5.2 Composite Summary

5.3 Log (Spikey Beach-1 RM ARC+Sonic)

6. Tail

Survey Record

Survey Calculation			
Method :	Minimum Radius of Curvature	DLS Method :	Lubinski
North Reference :	Grid North	Total Correction Formula :	Magnetic Dec - Grid Convergence
Grid Convergence :	0.73 deg		

Rig Location			
Latitude :	40° 28' 53.9" S	Longitude :	145° 52' 24.71" E

Tie In Point					
Measured Depth:	0.00 m	Inclination:	0.00 deg	Azimuth:	0.00 deg
True Vertical Depth:	0.00 m	North Displacement:	0.00 m	East Displacement:	0.00 m
N/-S VSec Origin:	0.00 m	E/-W VSec Origin:	0.00 m	Vertical Section Azimuth:	0.00 deg

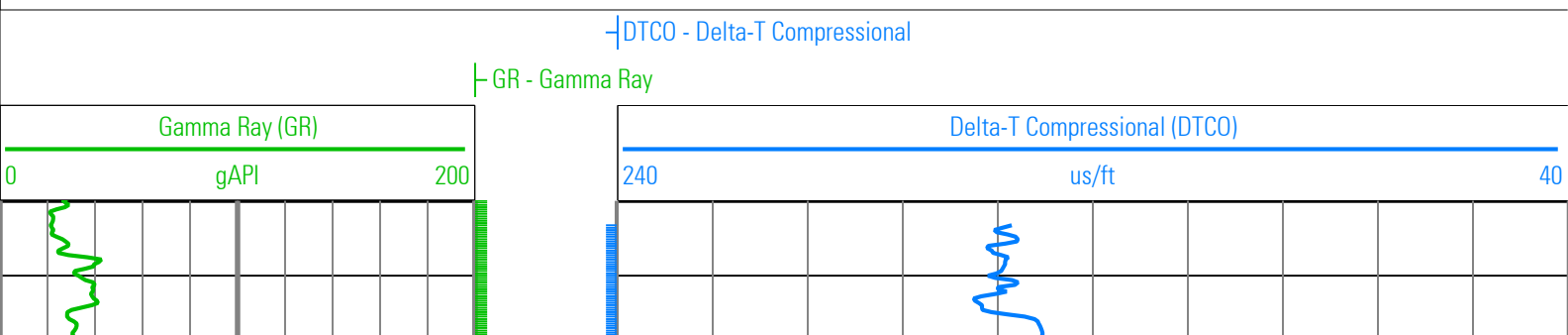
D&I Inits Computed and Values Used - Run 1			
Geomagnetic Model :	BGGM 2009	Geomagnetic Date :	07-Sep-2009
Computed Location B :	61230.34 nT +/- 300.00nT	Used Location B :	61230.34 nT +/- 300.00nT
Computed Location G :	999.55 mgn +/- 2.50mgn	Used Location G :	999.55 mgn +/- 2.50mgn
Computed Magnetic Dip :	-70.91 deg +/- 0.45deg	Used Magnetic Dip :	-70.91 deg +/- 0.45deg
Computed Magnetic Dec :	12.97 deg	Used Magnetic Dec :	12.97 deg
Computed Total Correction :	12.24 deg	Used Total Correction :	12.24 deg

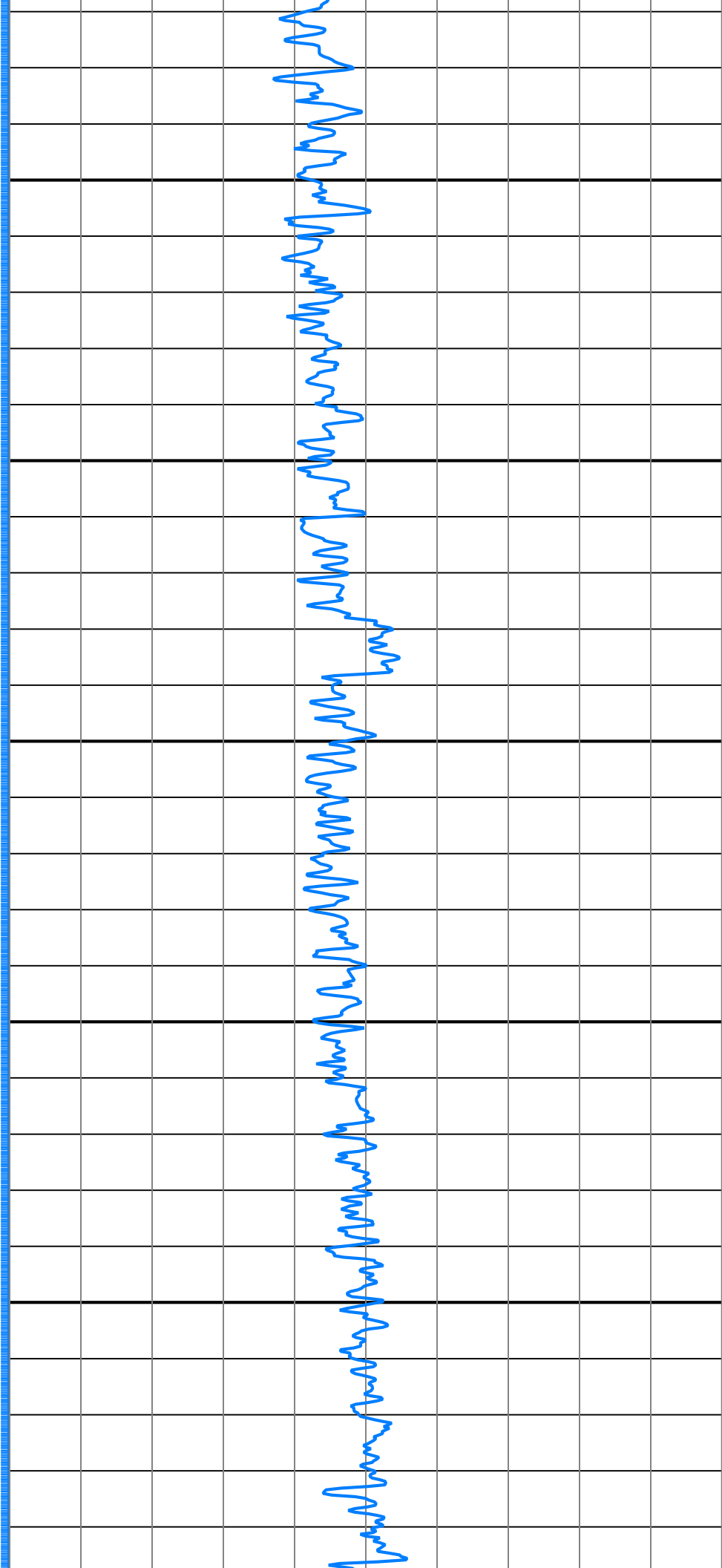
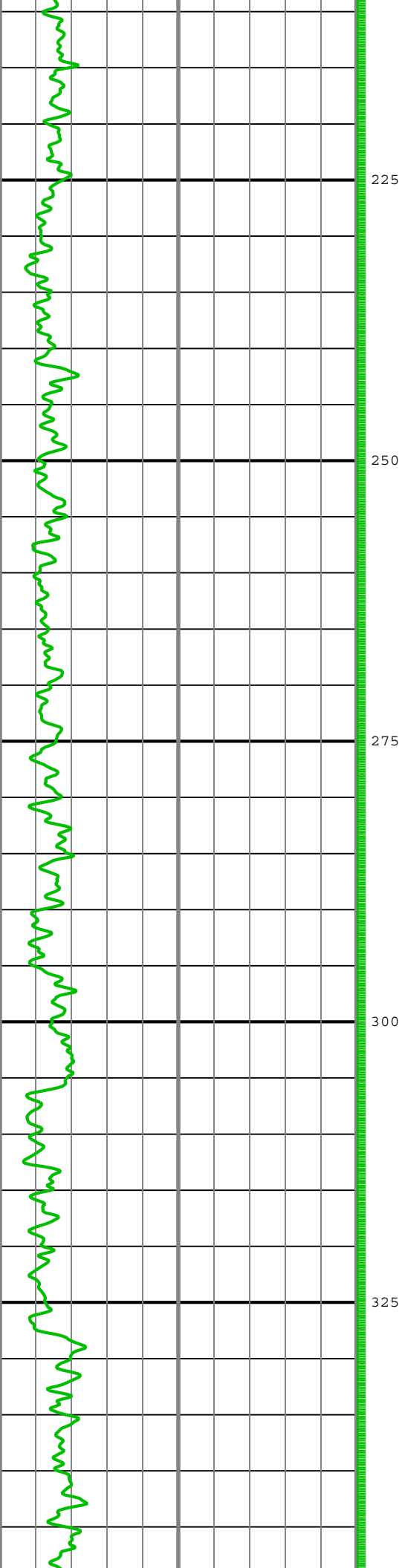
D&I Inits Computed and Values Used - Run 2			
Geomagnetic Model :	BGGM 2009	Geomagnetic Date :	10-Sep-2009
Computed Location B :	61230.23 nT +/- 300.00nT	Used Location B :	61230.23 nT +/- 300.00nT
Computed Location G :	999.55 mgn +/- 2.50mgn	Used Location G :	999.55 mgn +/- 2.50mgn
Computed Magnetic Dip :	-70.91 deg +/- 0.45deg	Used Magnetic Dip :	-70.91 deg +/- 0.45deg
Computed Magnetic Dec :	12.97 deg	Used Magnetic Dec :	12.97 deg
Computed Total Correction :	12.24 deg	Used Total Correction :	12.24 deg

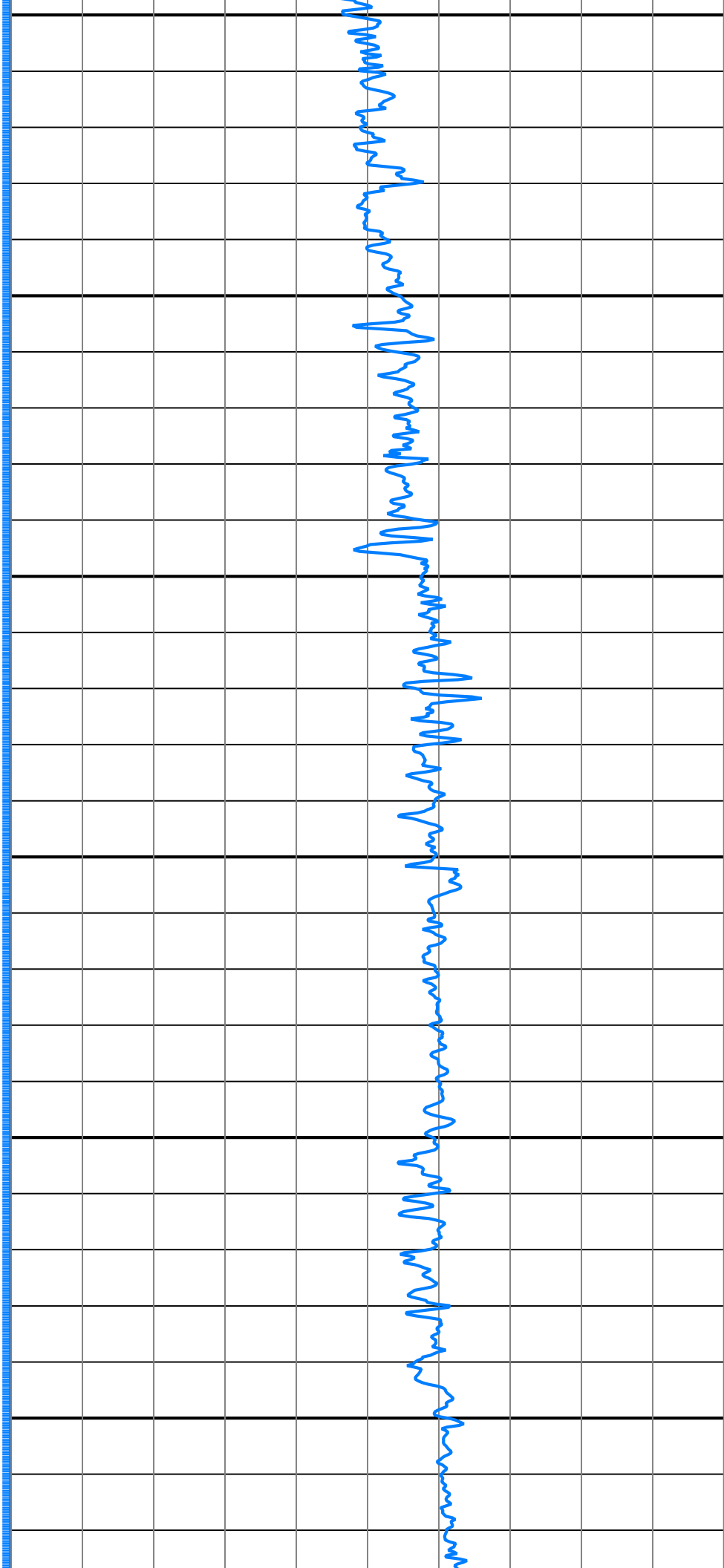
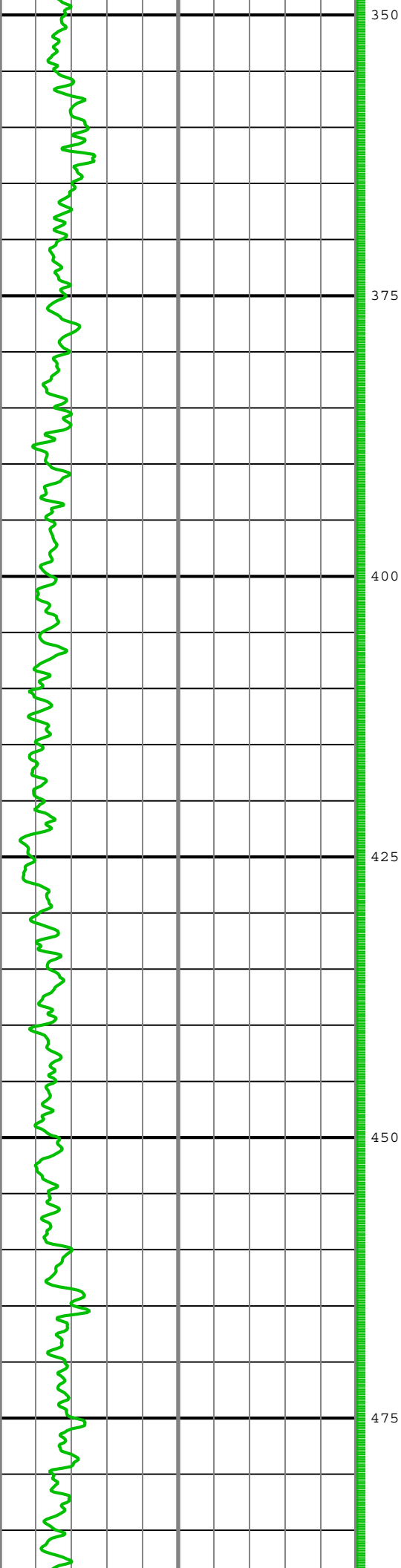
Survey Quality Index		
0 : Long, passed all criteria	9 : Manual	10 : DMAG-Corrected

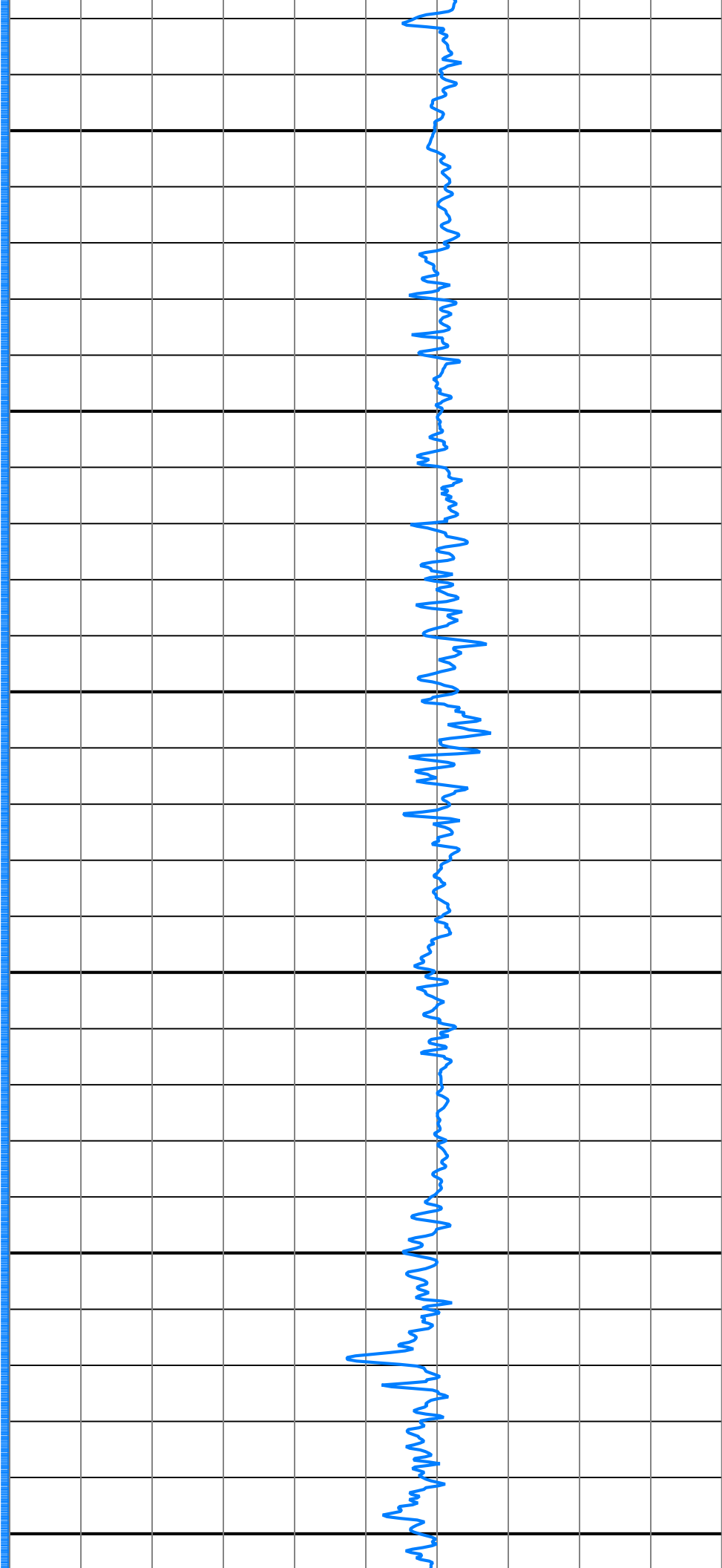
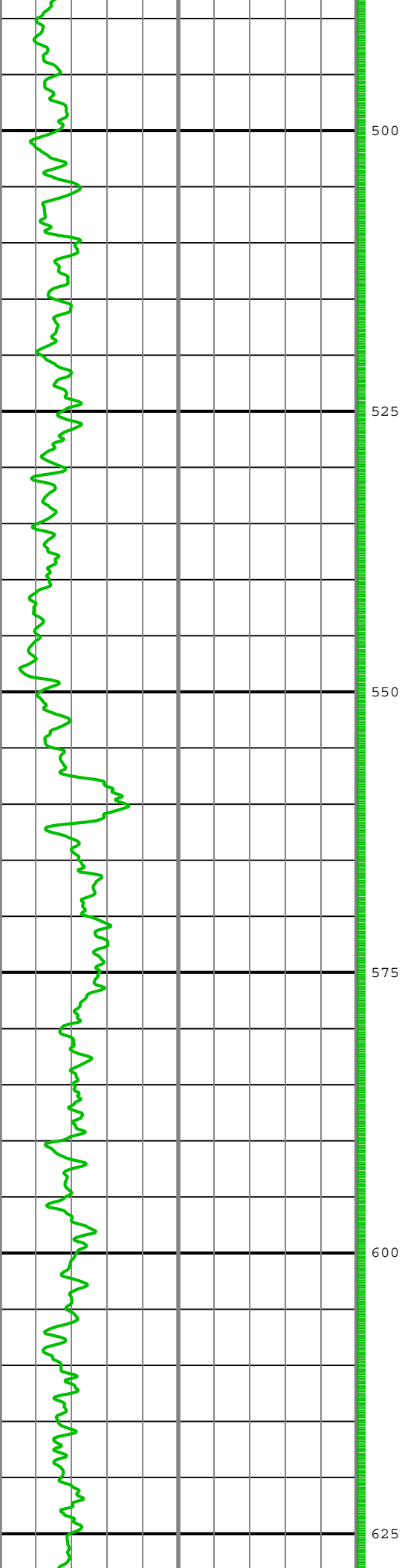
Survey Correction Index														
0 : No correction														

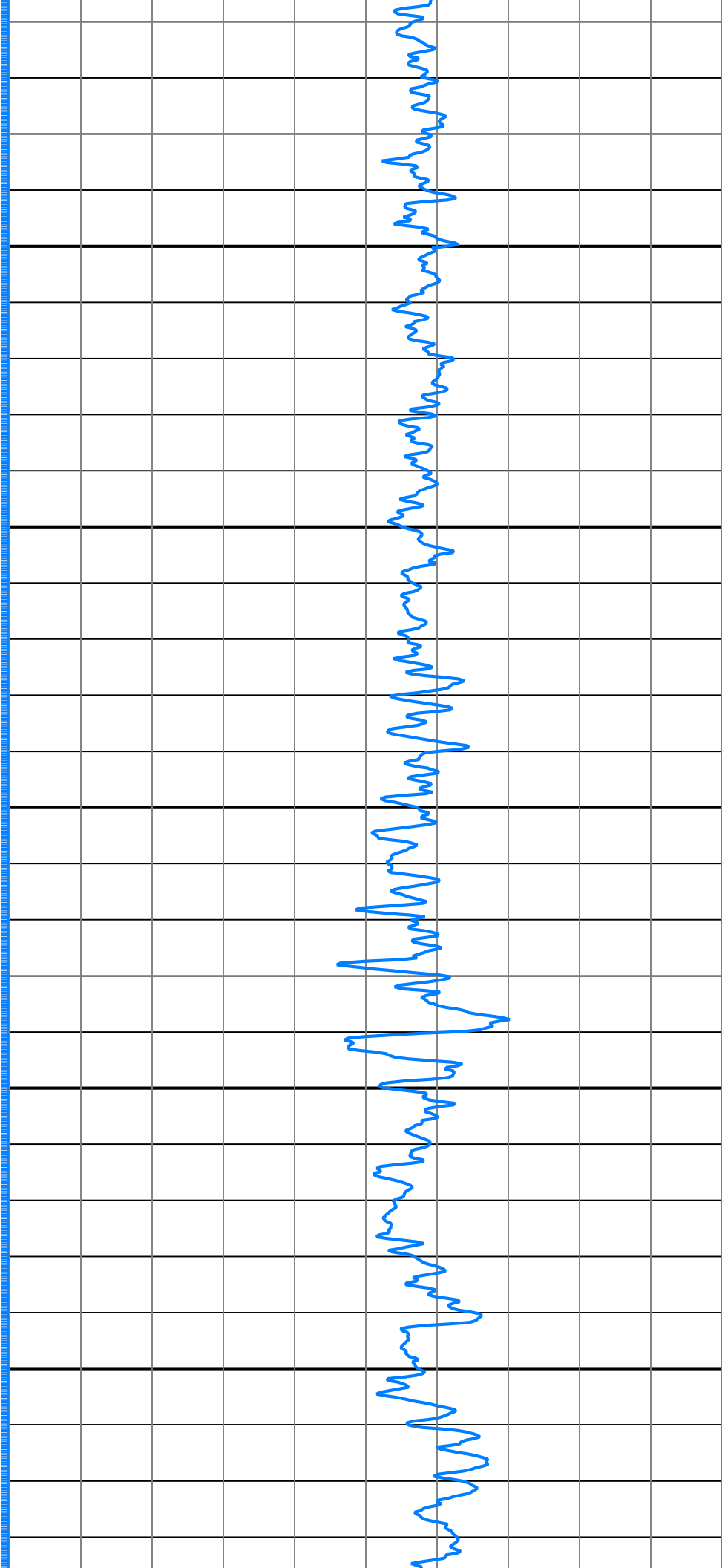
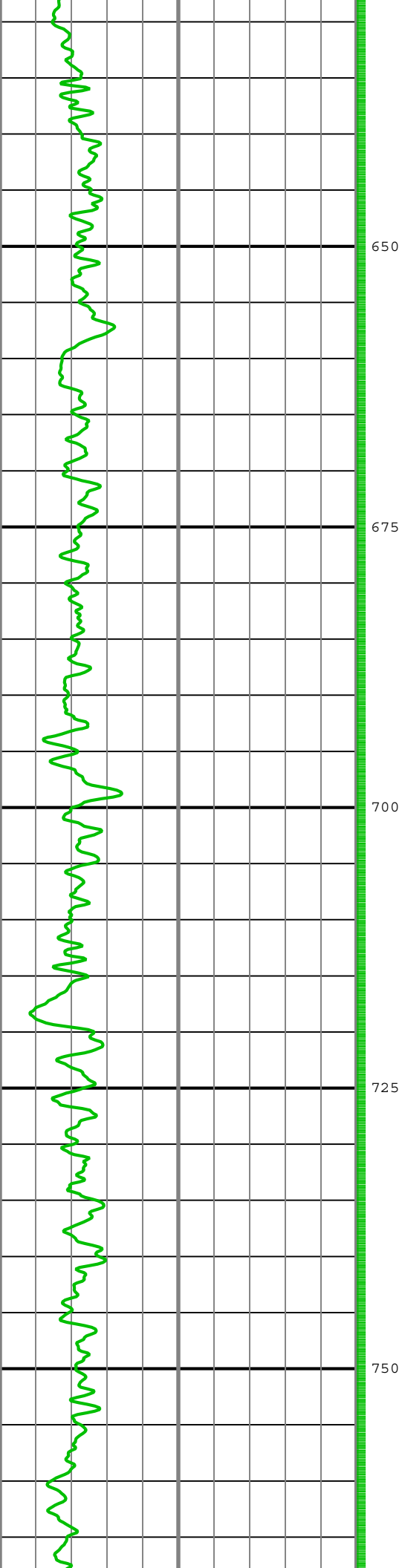
Seq	MD (m)	Incl (deg)	Azim (deg)	Course (m)	TVD (m)	V Sec (m)	N/ -S (m)	E/ -W (m)	Closure (m)	at Azi (deg)	DLS deg/30m	Tool Type	QI	CI
1	0.00	0.00	0.00	0.00	0.00	0.00	0.00	0.00	0.00	90.00	0.00	TIP		
2	179.35	0.24	83.43	179.35	179.35	0.04	0.04	0.37	0.38	83.43	0.04	Manual	10	
3	206.93	0.26	40.89	27.58	206.93	0.10	0.10	0.47	0.48	78.39	0.20	Manual	10	
4	294.67	0.37	50.63	87.74	294.67	0.43	0.43	0.82	0.93	62.51	0.04	Manual	10	
5	338.42	0.10	101.79	43.75	338.42	0.51	0.51	0.97	1.09	62.25	0.22	Manual	10	
6	352.67	0.17	96.28	14.25	352.67	0.50	0.50	1.00	1.12	63.26	0.15	Manual	10	
7	382.26	0.19	48.22	29.59	382.26	0.53	0.53	1.08	1.20	63.80	0.15	Manual	10	
8	468.33	0.04	55.57	86.07	468.33	0.64	0.64	1.21	1.37	62.02	0.05	Manual	10	
9	514.50	0.11	259.09	46.17	514.50	0.64	0.64	1.18	1.35	61.39	0.10	Manual	10	
10	556.06	0.15	276.07	41.56	556.06	0.64	0.64	1.09	1.26	59.43	0.04	Manual	10	
11	642.56	0.27	259.55	86.50	642.56	0.62	0.62	0.78	0.99	51.45	0.05	Manual	10	

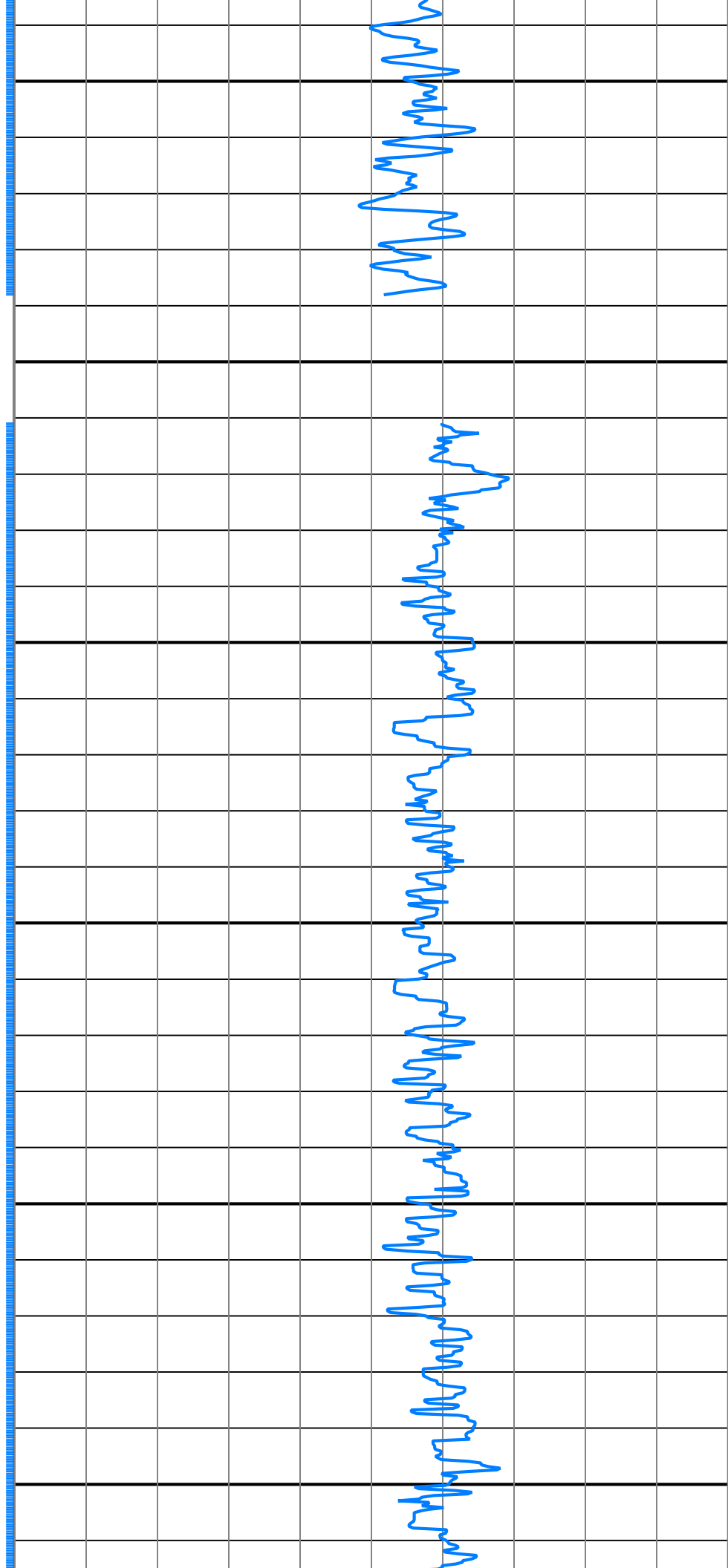
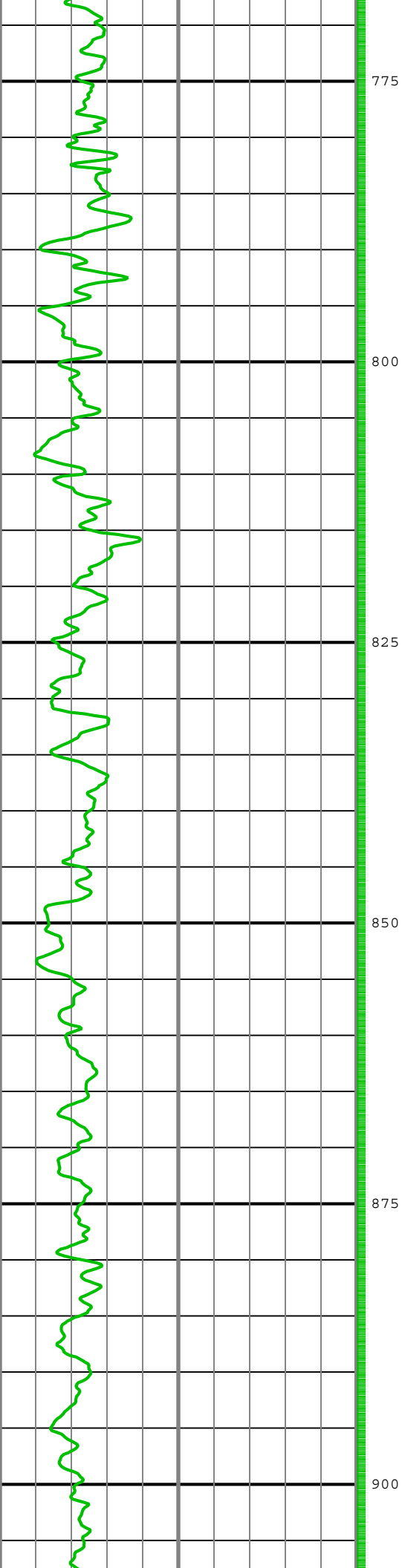


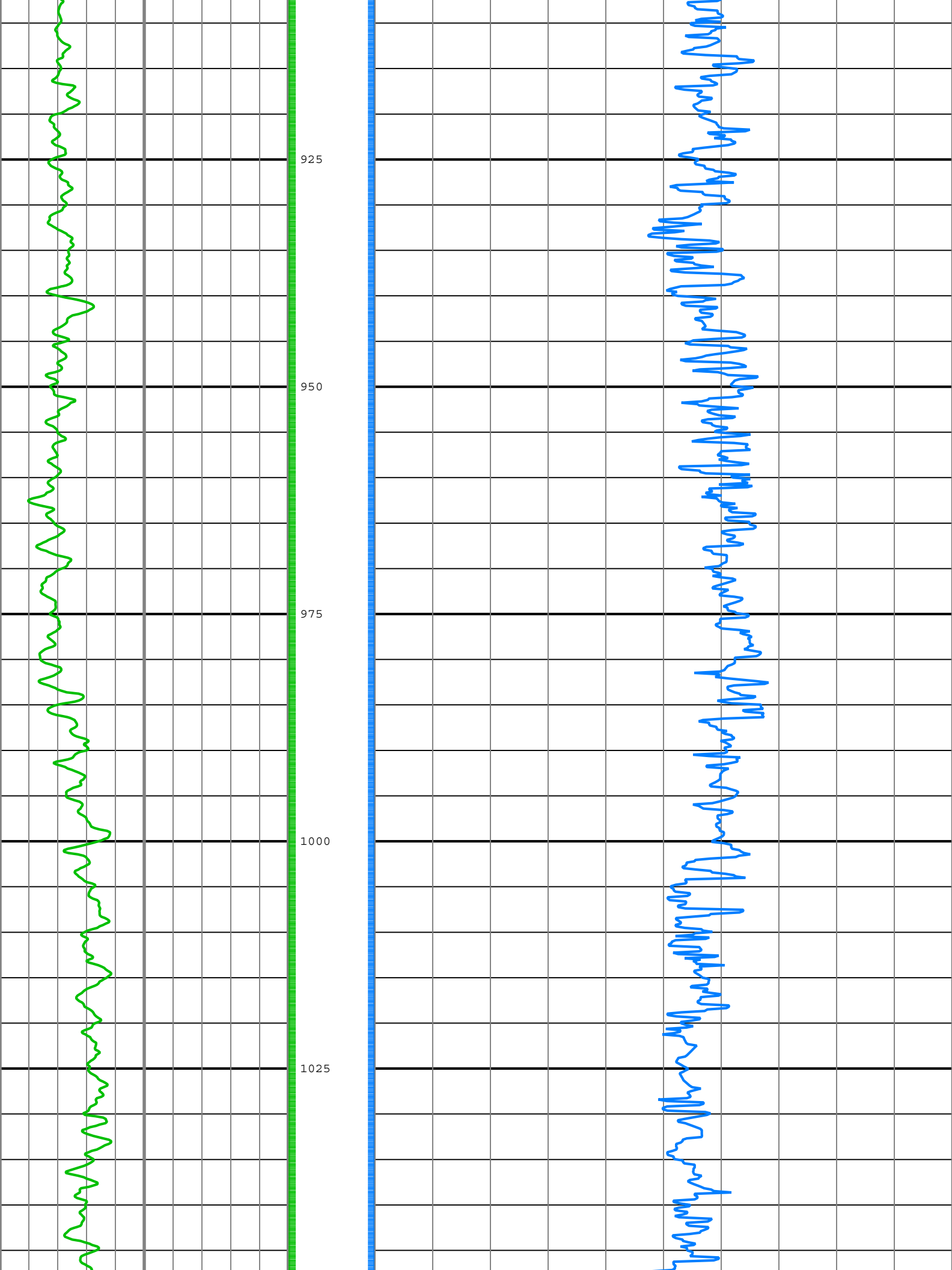


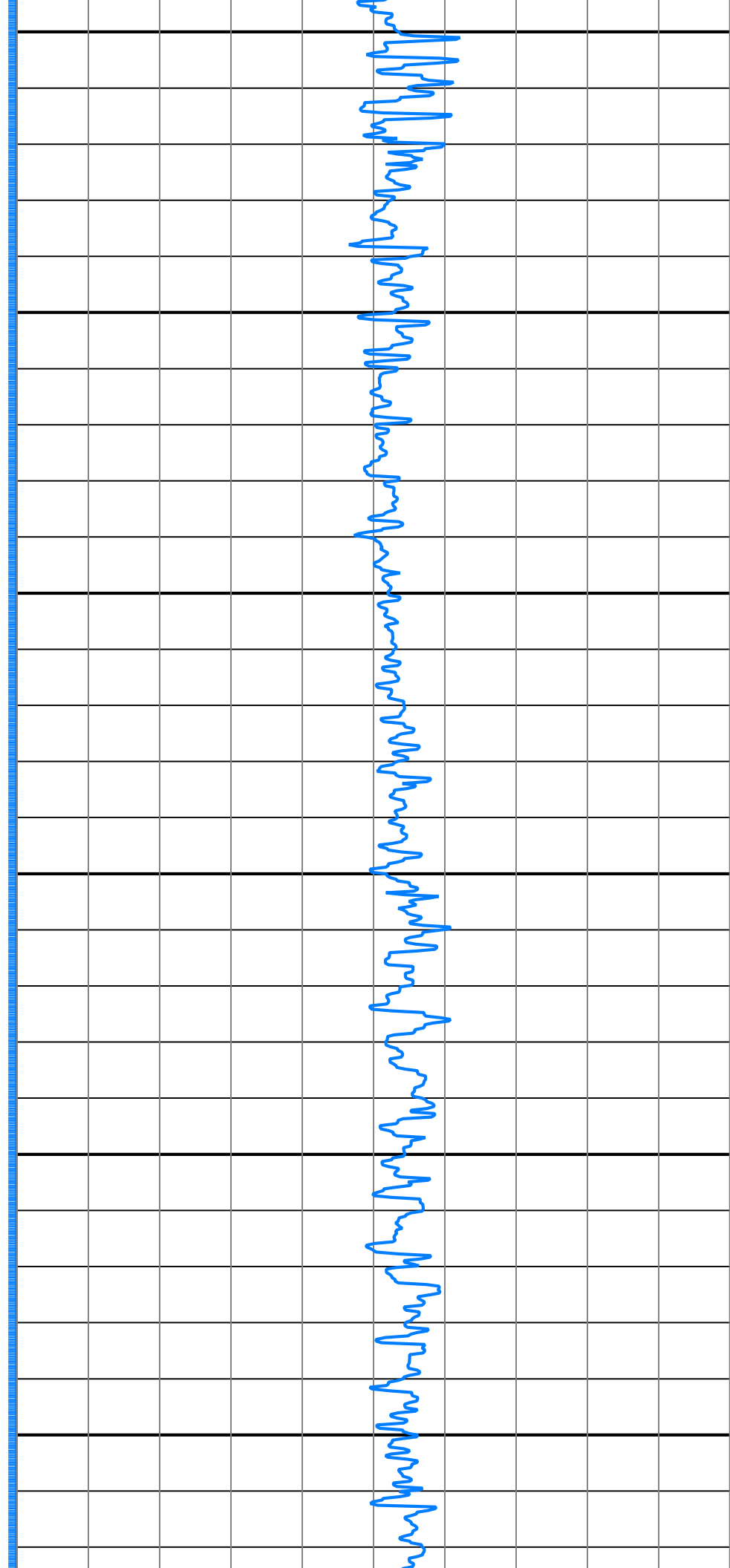
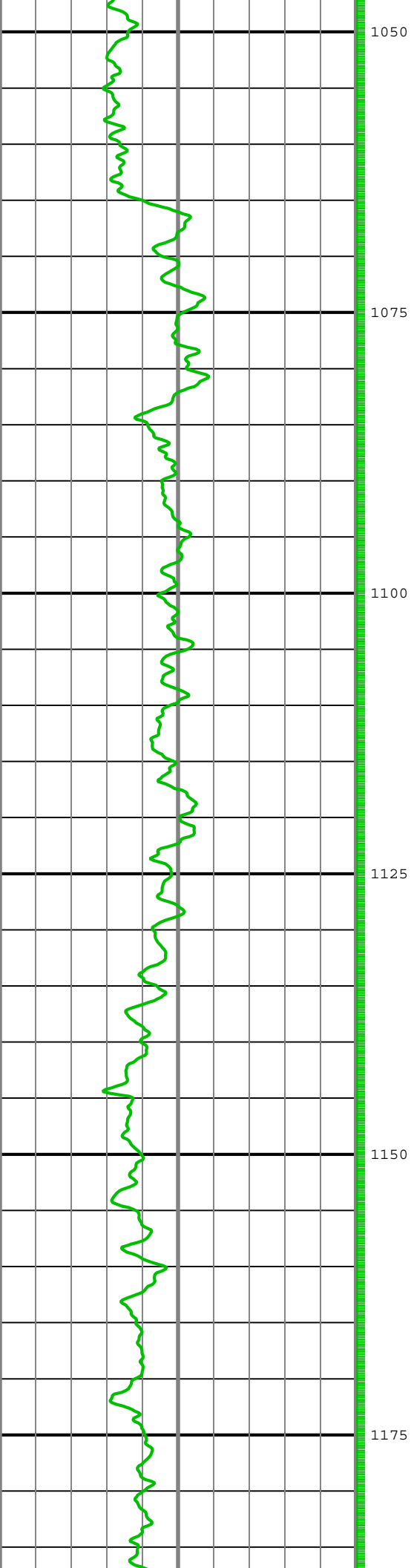


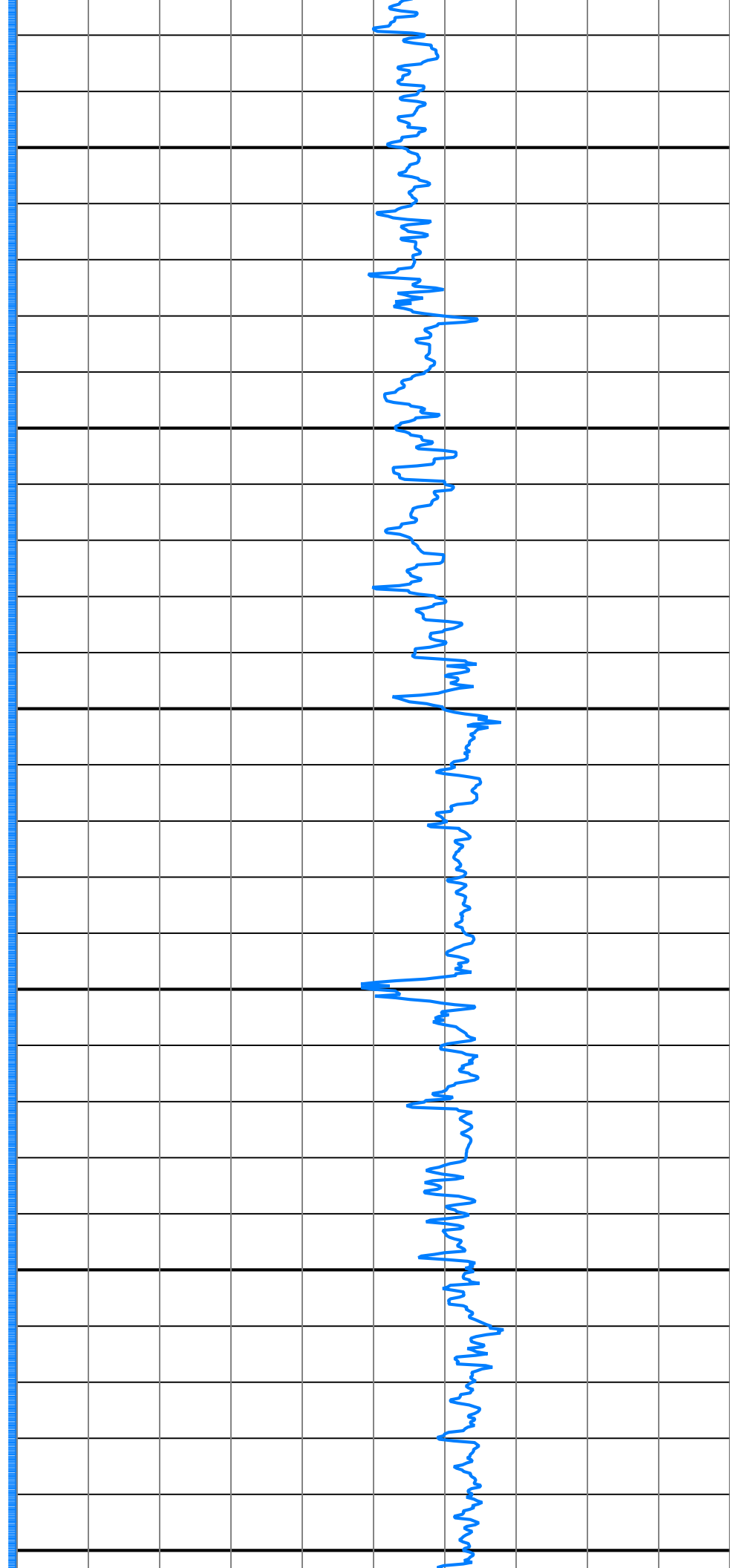


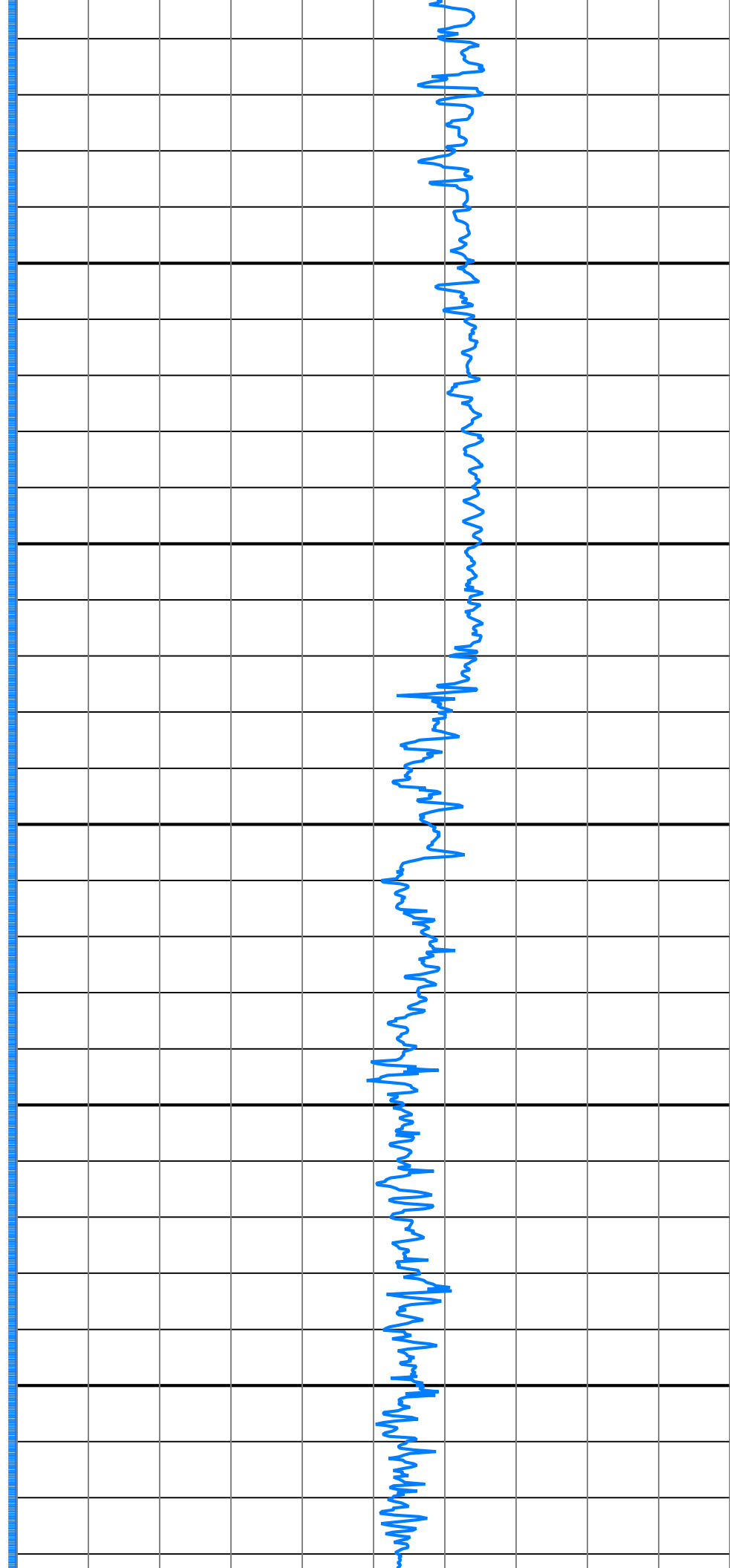


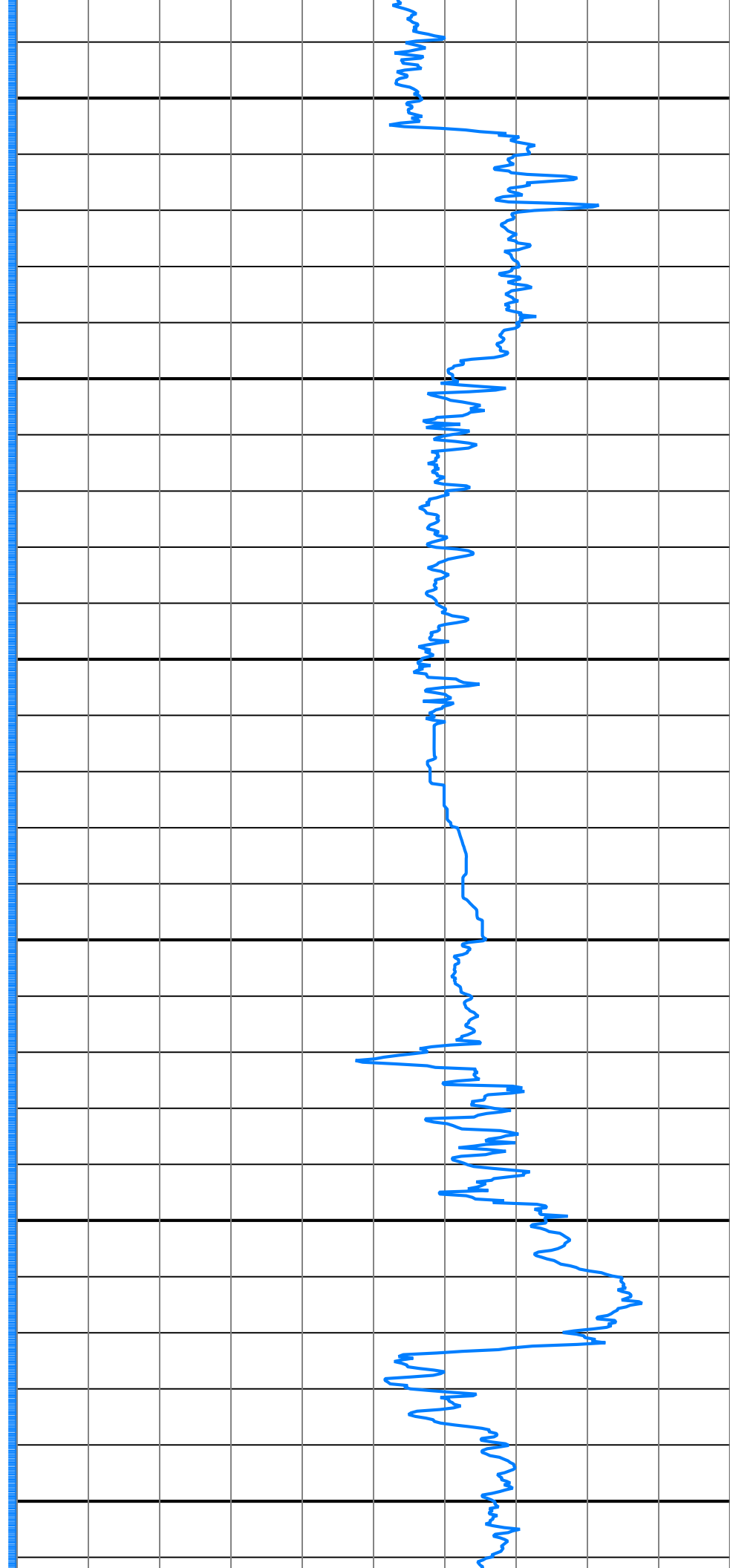


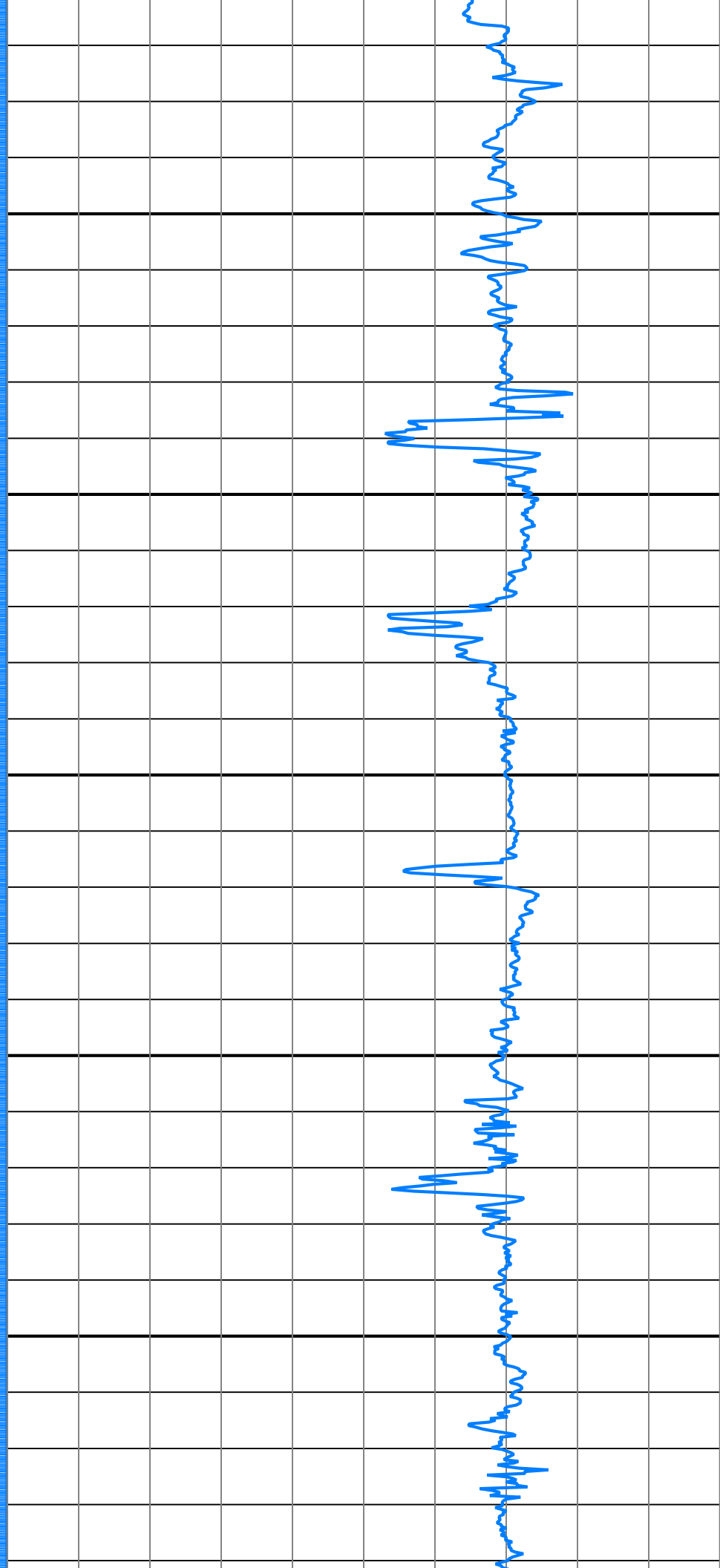
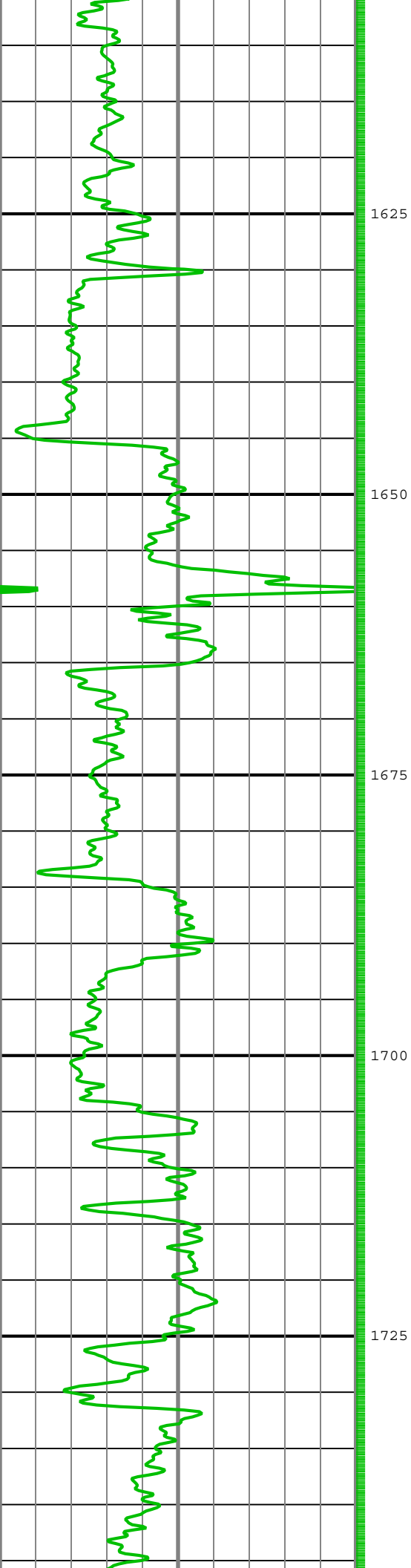


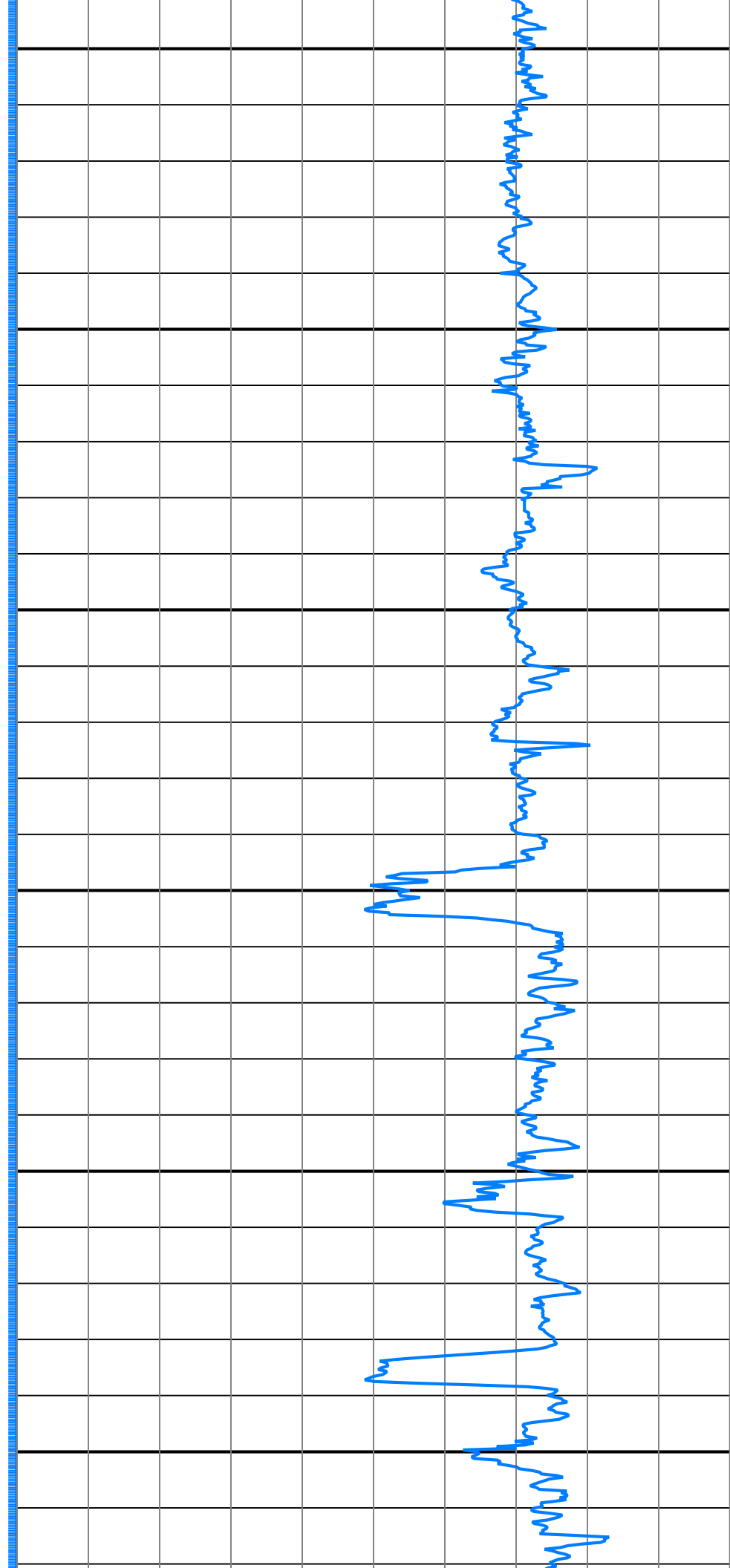
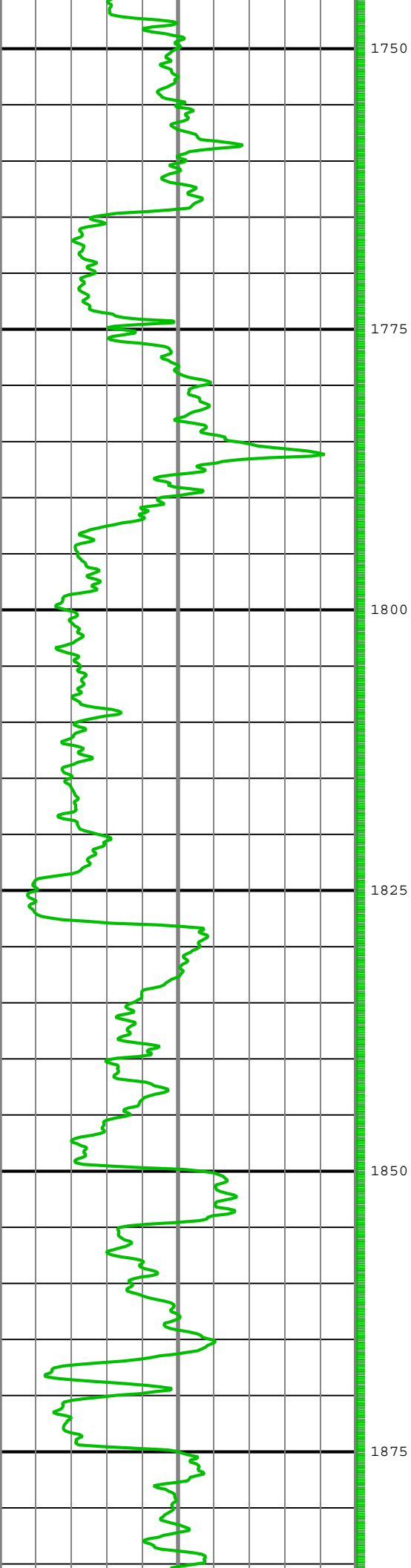


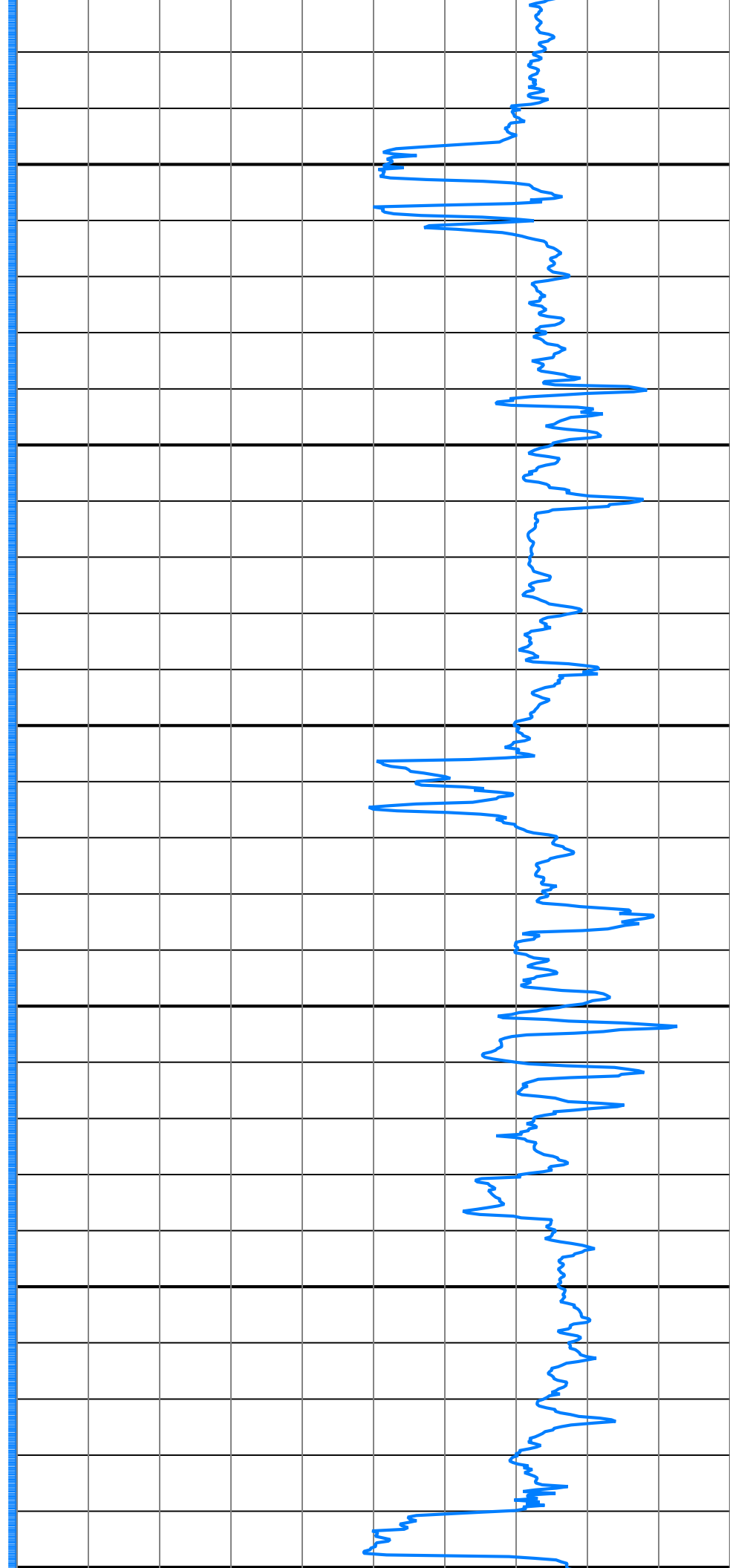
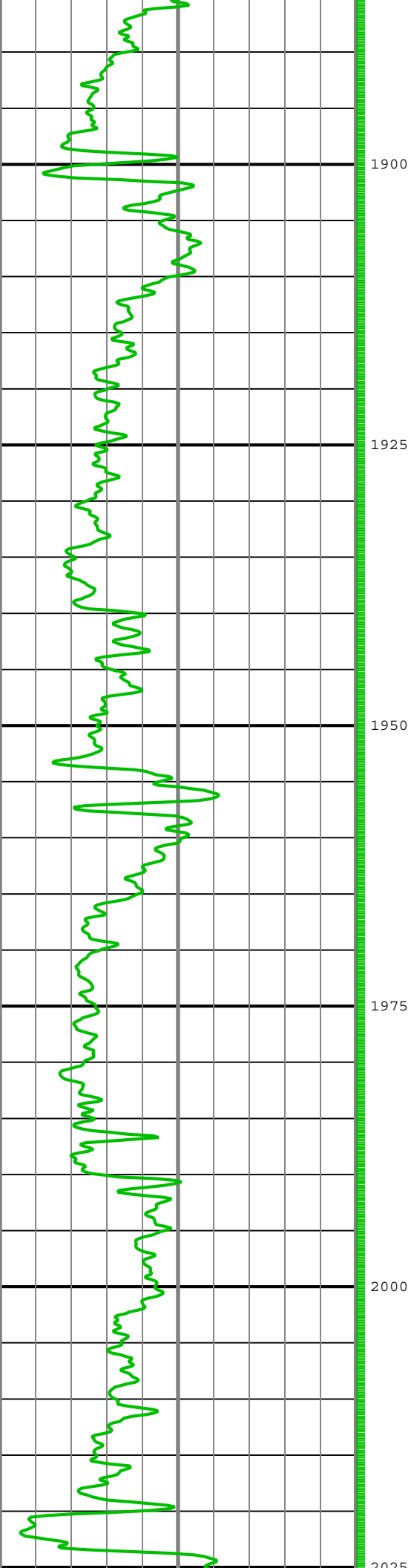


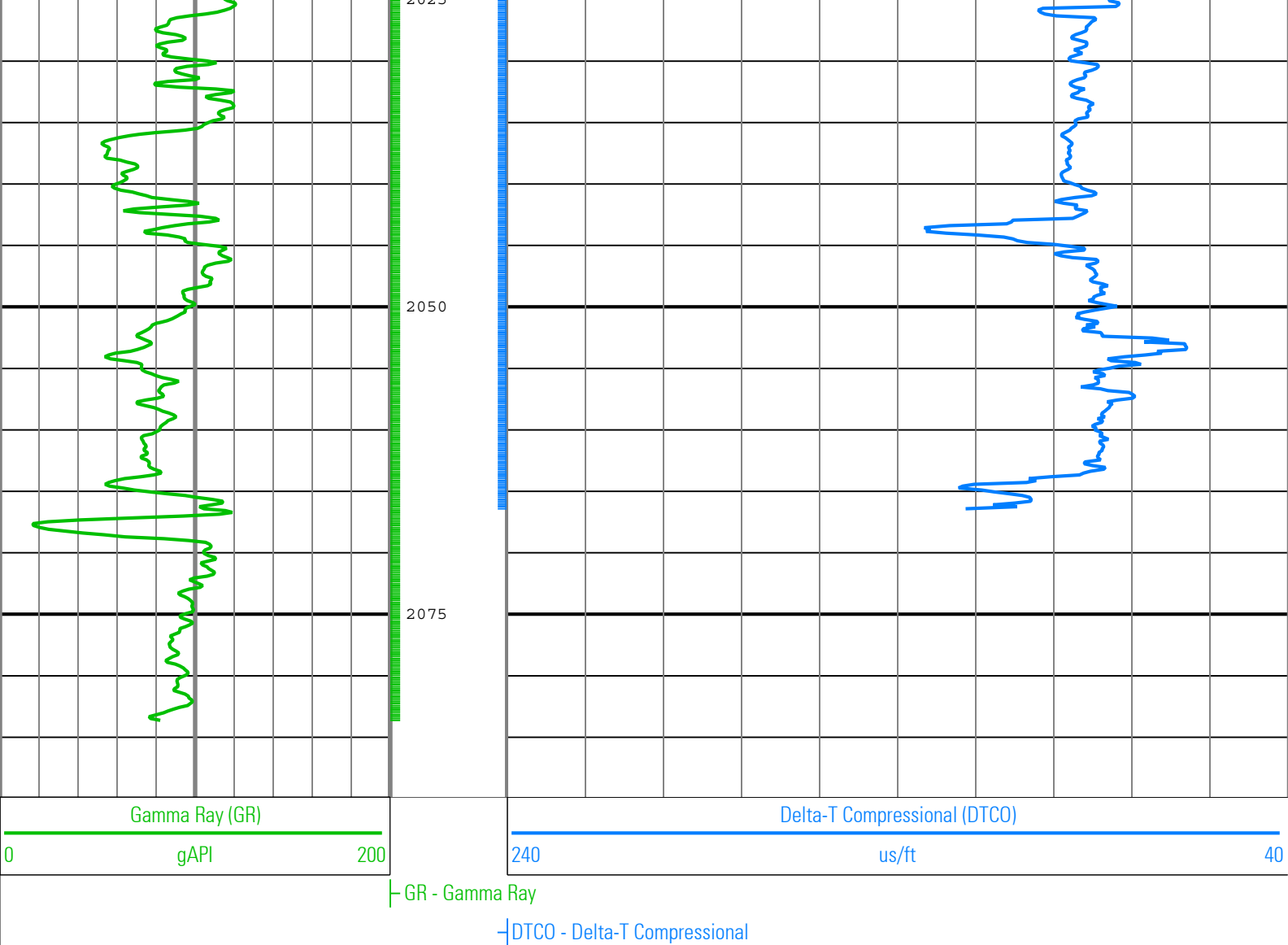












Description: ARC + sonicVISION Format: Log (Spikey Beach-1 RM ARC+Sonic) Index Scale: 1:500 Index Unit: m Index Type: Measured Depth Creation Date: 17-Sep-2009 10:34:51

Company: Beach Petroleum Ltd

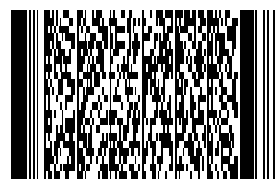
Well: Spikey Beach-1

Field: Exploration

County: n/a

State: Tasmania

Country: Australia



Schlumberger

sonicVISION
1:500 Measured Depth
Recorded Mode Log